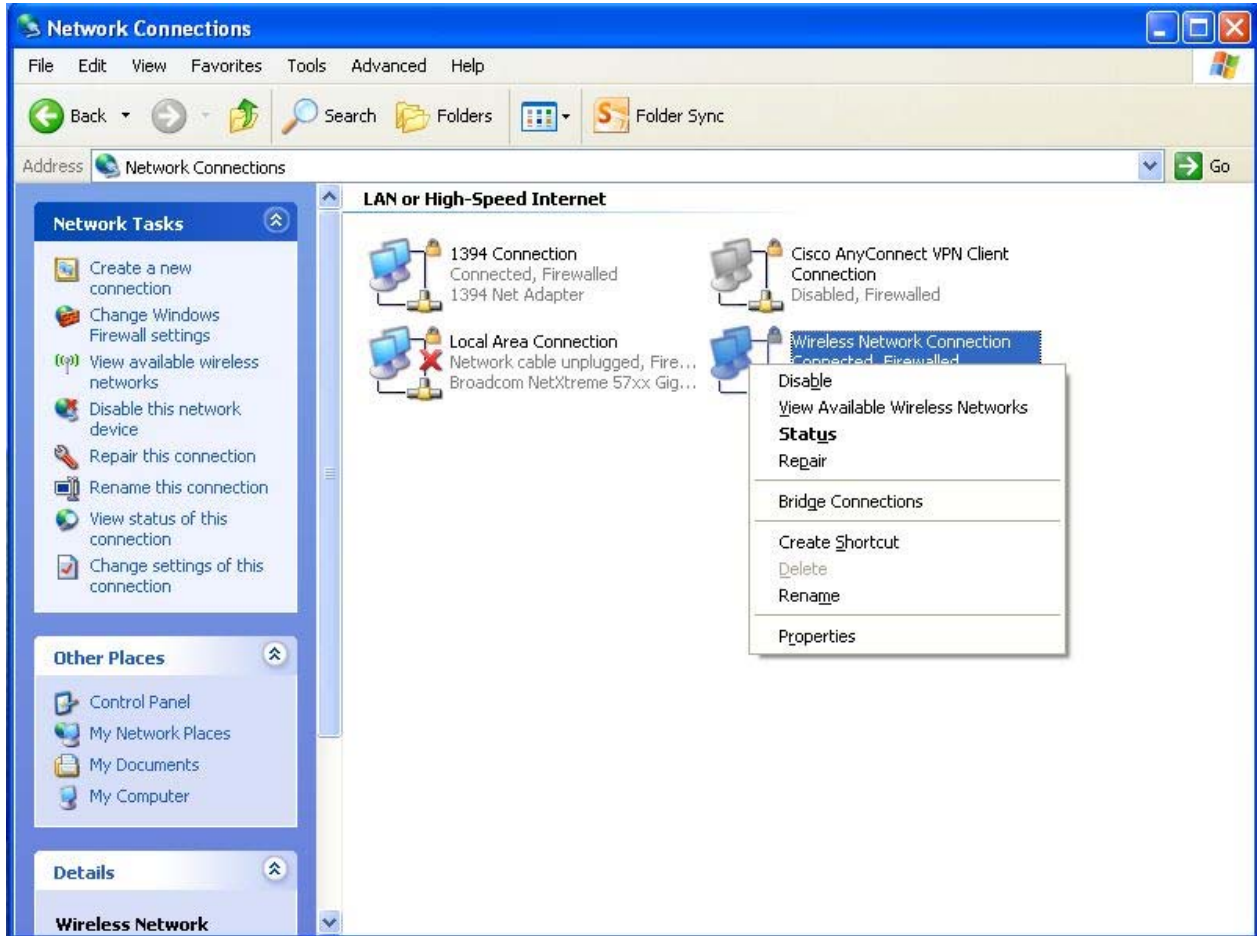


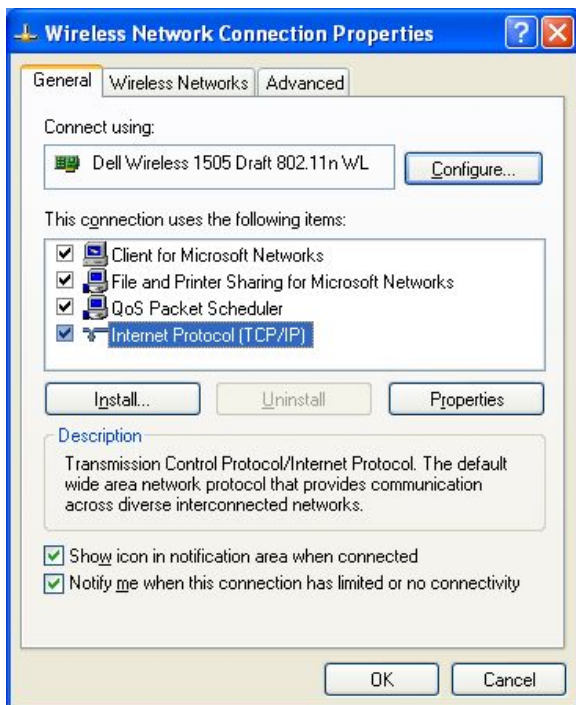
# Eduroam with Windows XP

First make sure WLAN interface on your notebook is switched on.  
Open "Network Connections" via: Start -> Settings -> Control Panel -> Network Connections  
Right-click on "Wireless network Connection". Click on Properties.



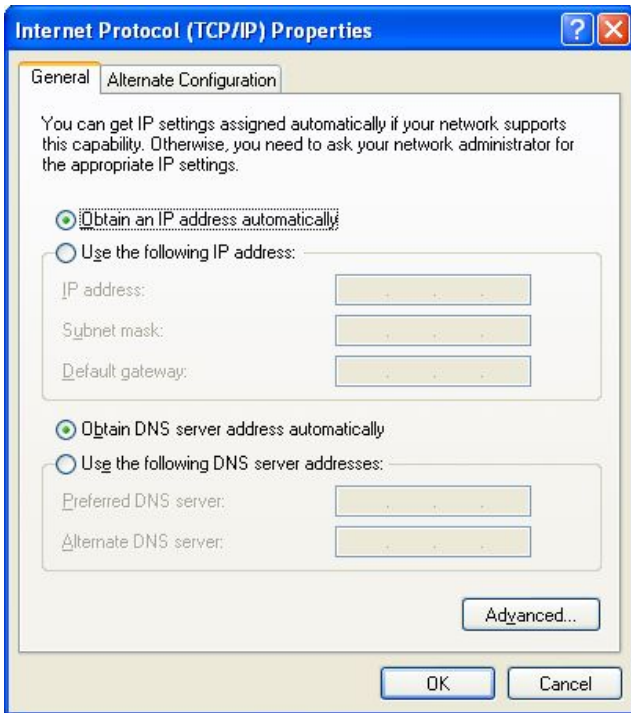
Network Connections

Check TCP/IP Settings.  
Right-click on "Internet Protocol (TCP/IP)". Click on Properties.



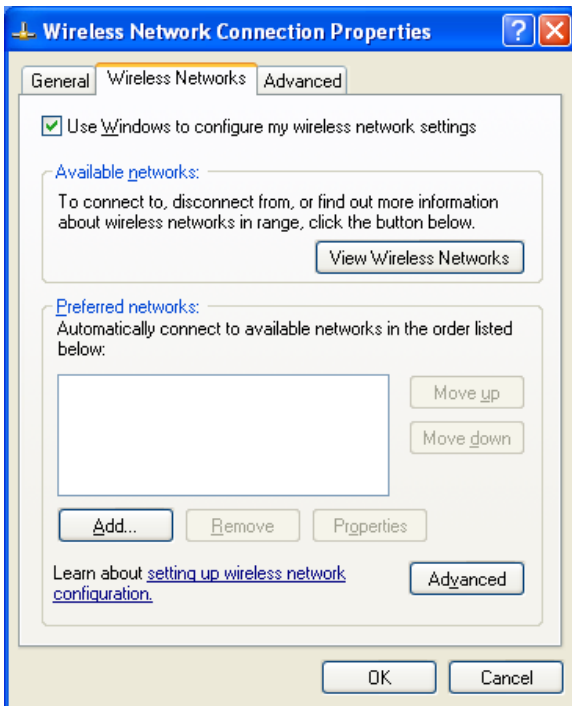
TCP/IP

IP address and DNS server address should be obtained automatically.



Obtain addresses automatically

Close the windows by clicking "OK". Switch to tab "Wireless networks".



Wireless Networks

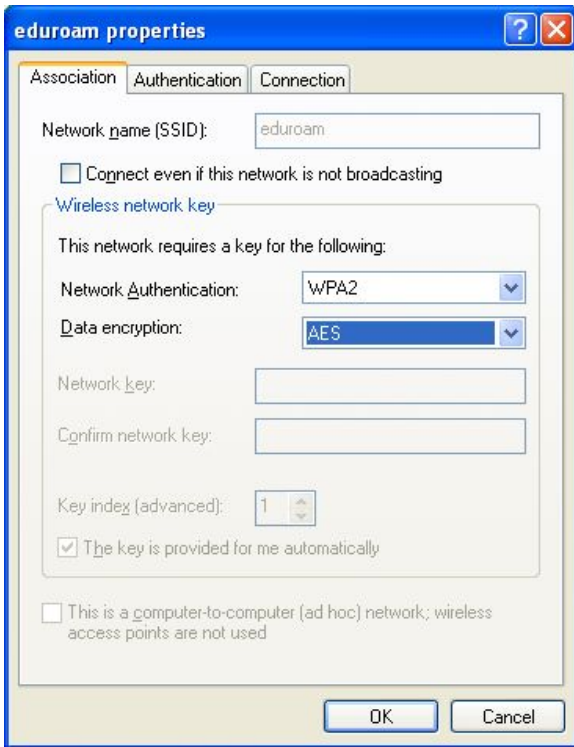
Check "Use Windows to configure my wireless network settings".

Click on "Add" (Preferred networks)

Network name (SSID): **eduroam**

Network Authentication: **WPA2**

Data encryption: **AES**



Wireless Networks Properties

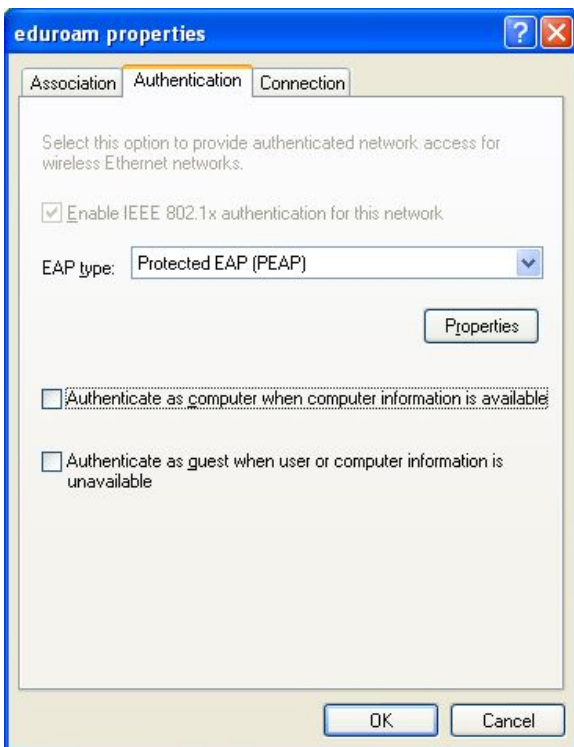
Uncheck "This is a computer-to-computer (ad hoc) network; wireless access points are not used".

Switch to tab "Authentication".

Choose EAP type: **Protected EAP (PEAP)**

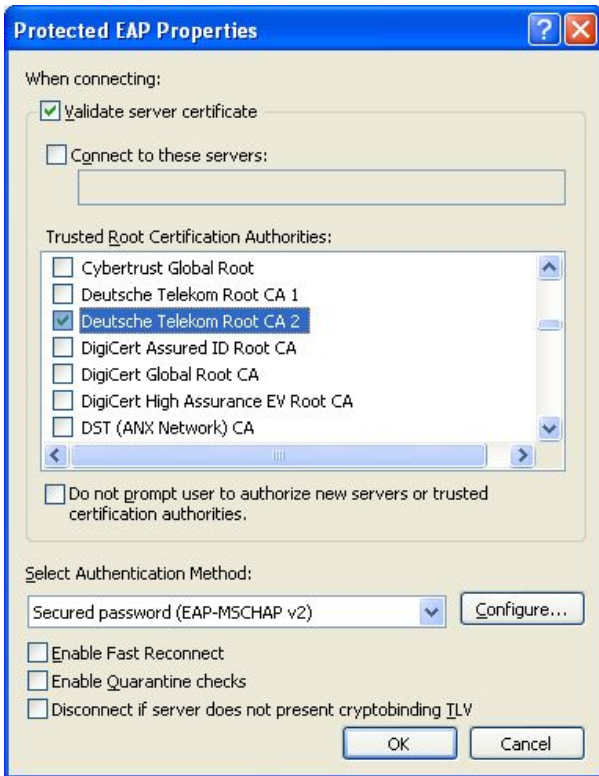
Uncheck "Authenticate as computer when computer information is available".

Uncheck "Authenticate as guest when user or computer information is unavailable".



Wireless Networks Properties

Click on "Properties".



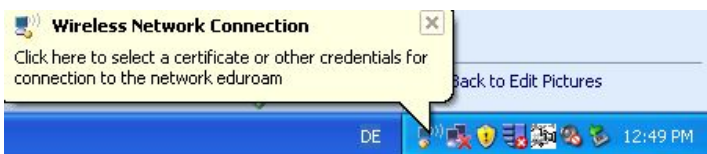
Protected EAP Properties

Check "Validate server certificate" and "Deutsche Telekom Root CA 2".  
Choose "Secured password (EAP-MSCHAP v2)" from drop down menu.  
Click on "Configure".



EAP-MSCHAPv2 Properties

Uncheck "Automatically use my Windows logon name and password (and domain if any)".  
Close all windows by clicking "OK".  
If you reach an eduroam hotspot you will be prompted for credentials for connection to the network eduroam.



Credentials for connection

Click on balloon tip and insert your access data into the following window:  
User name: xxxxxx@ice.mpg.de (Replace xxxxxx with your username)  
Password: Your password  
Logon domain: leave blank



Enter credentials

Click "OK". After that you should have access to the network.

*The original document is available at <http://intranet.ice.mpg.de/edv-wiki/tiki-index.php?page=Eduroam+with+Windows+XP>*