

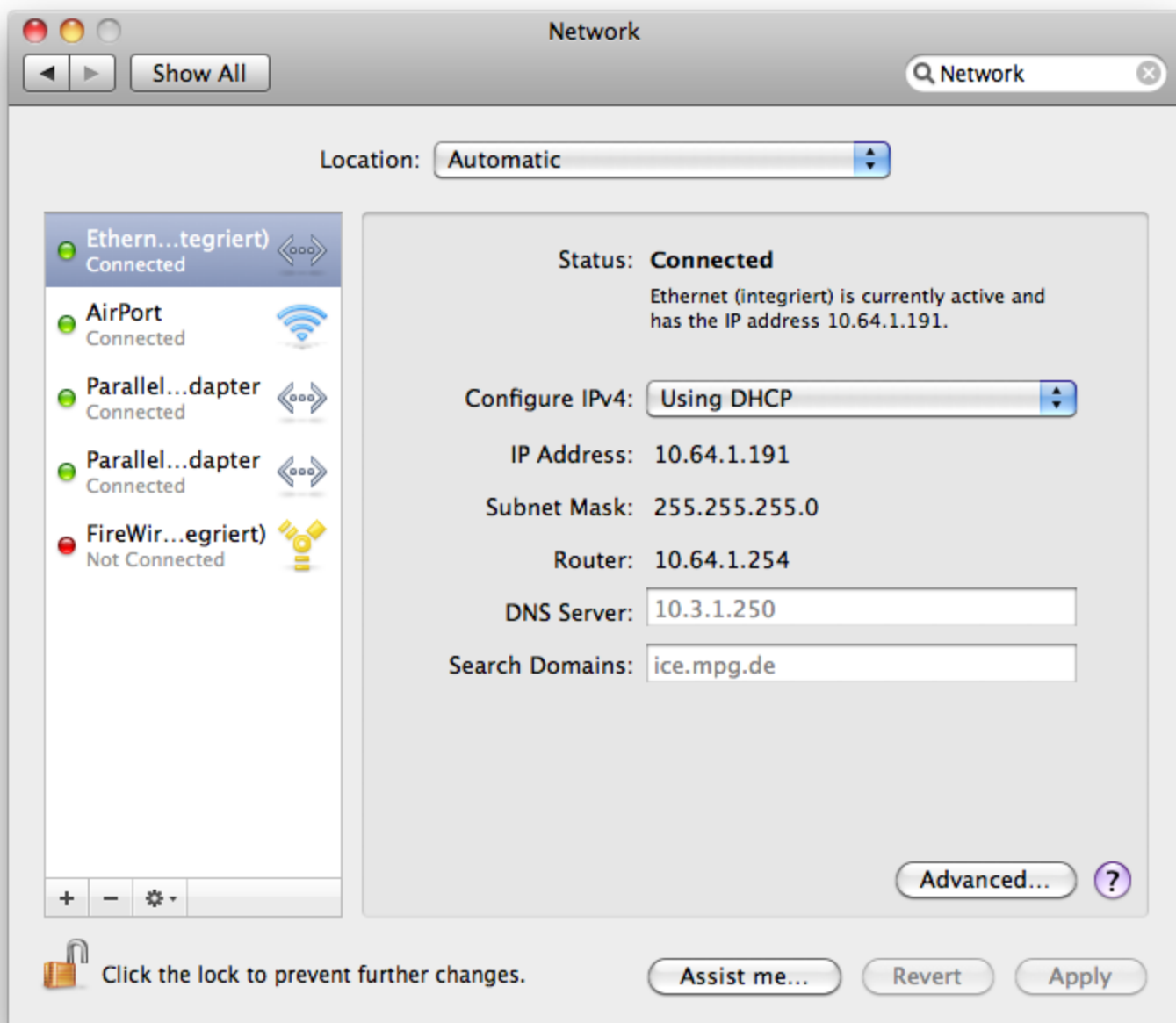
Eduroam with Mac OS X

First open the System Preferences and find the Network settings icon.



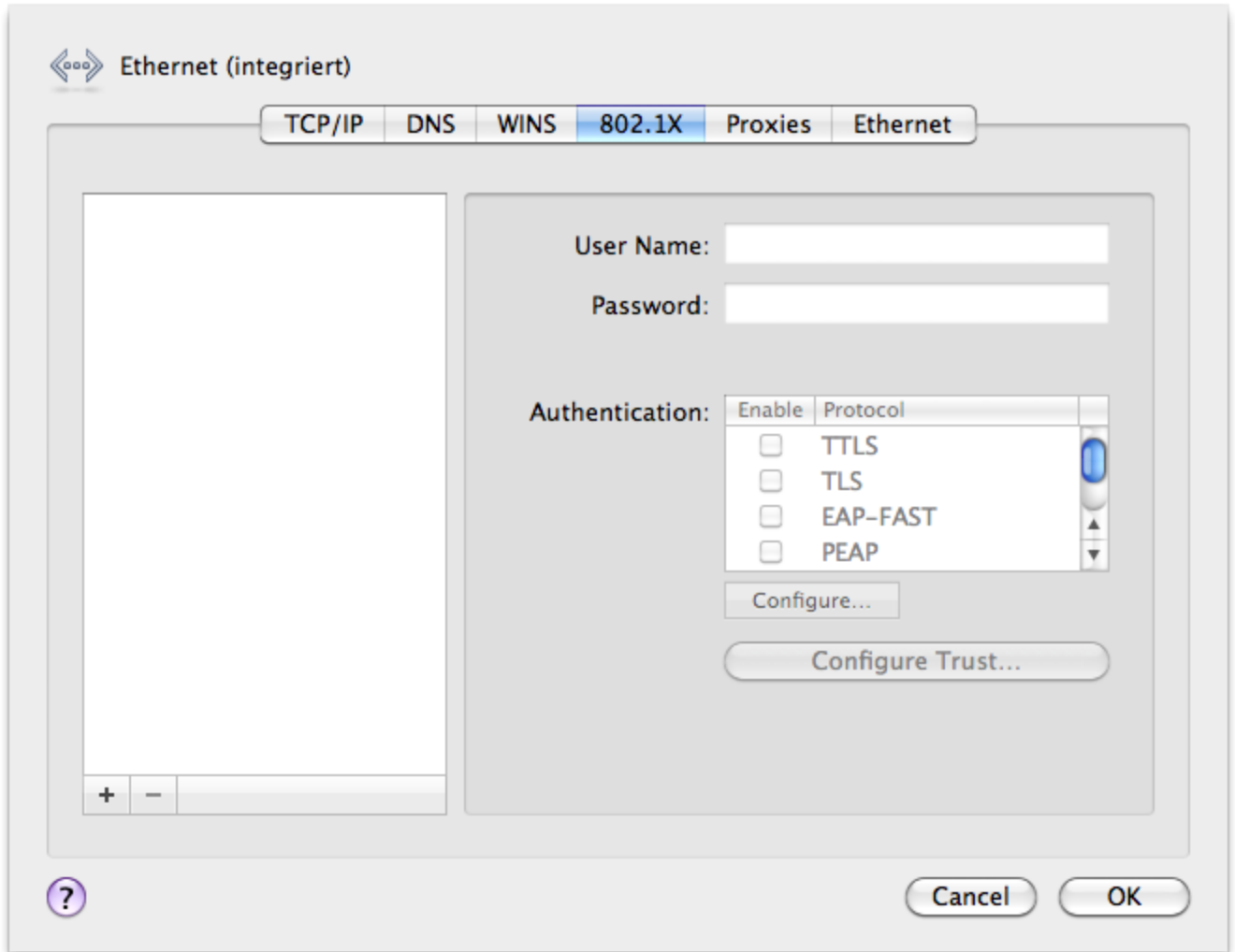
Preferences

Choose your type of connection (Airport will do it in most cases) and click on the "Advanced" button.



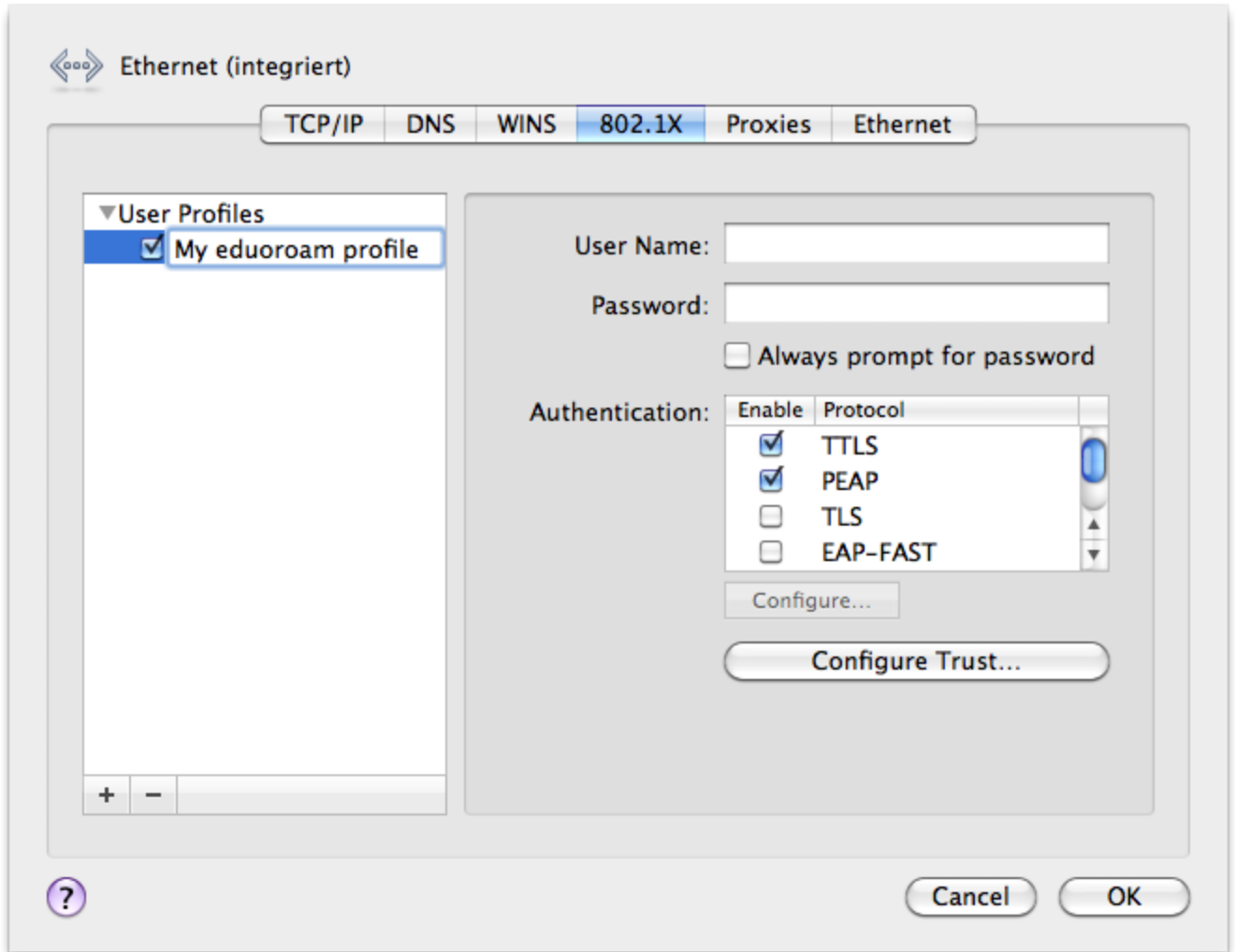
Network

Navigate to the 802.1X tab and create a new **User Profile** by clicking on the little "+" sign on the lower left edge.



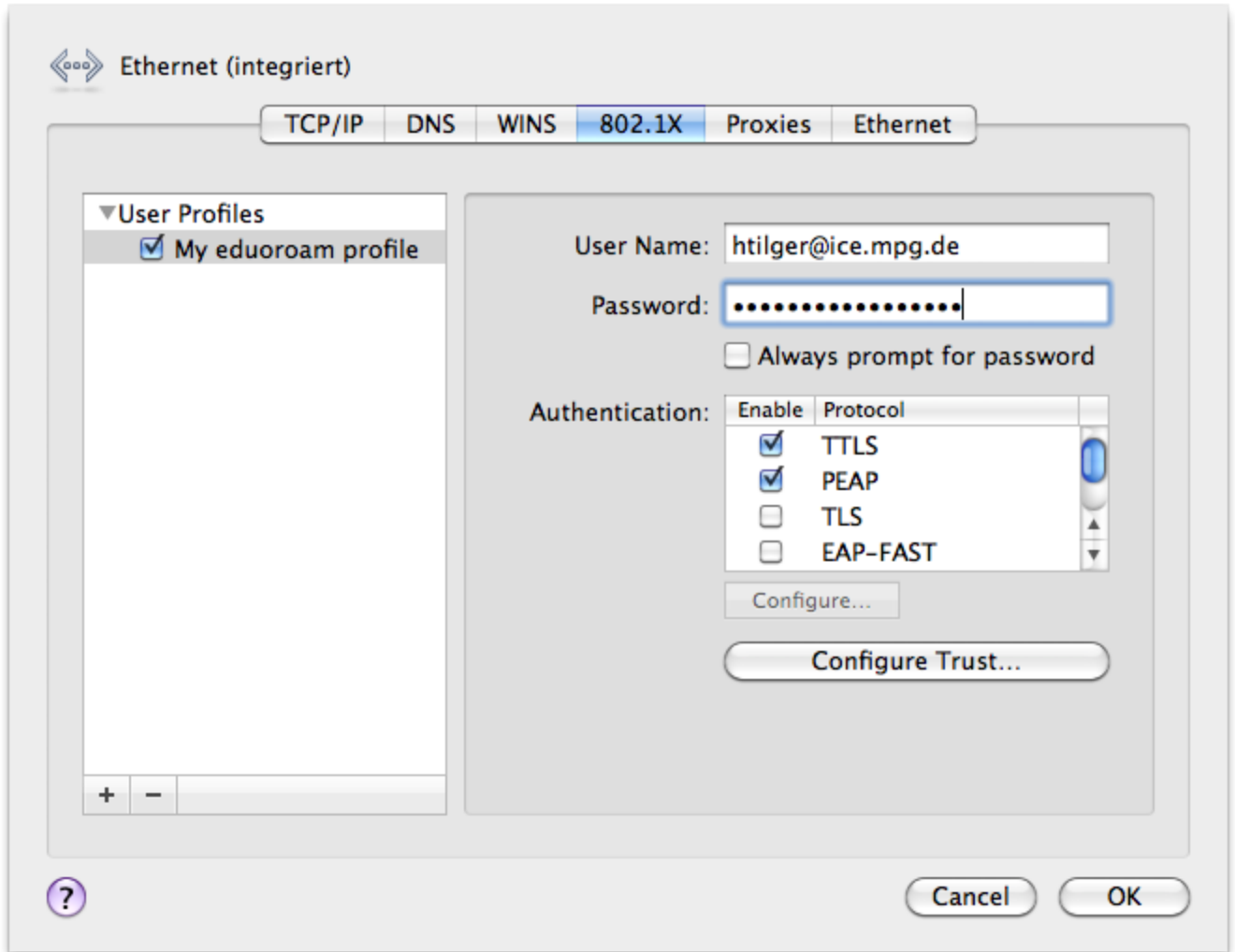
802.1X

Name the profile as you like...



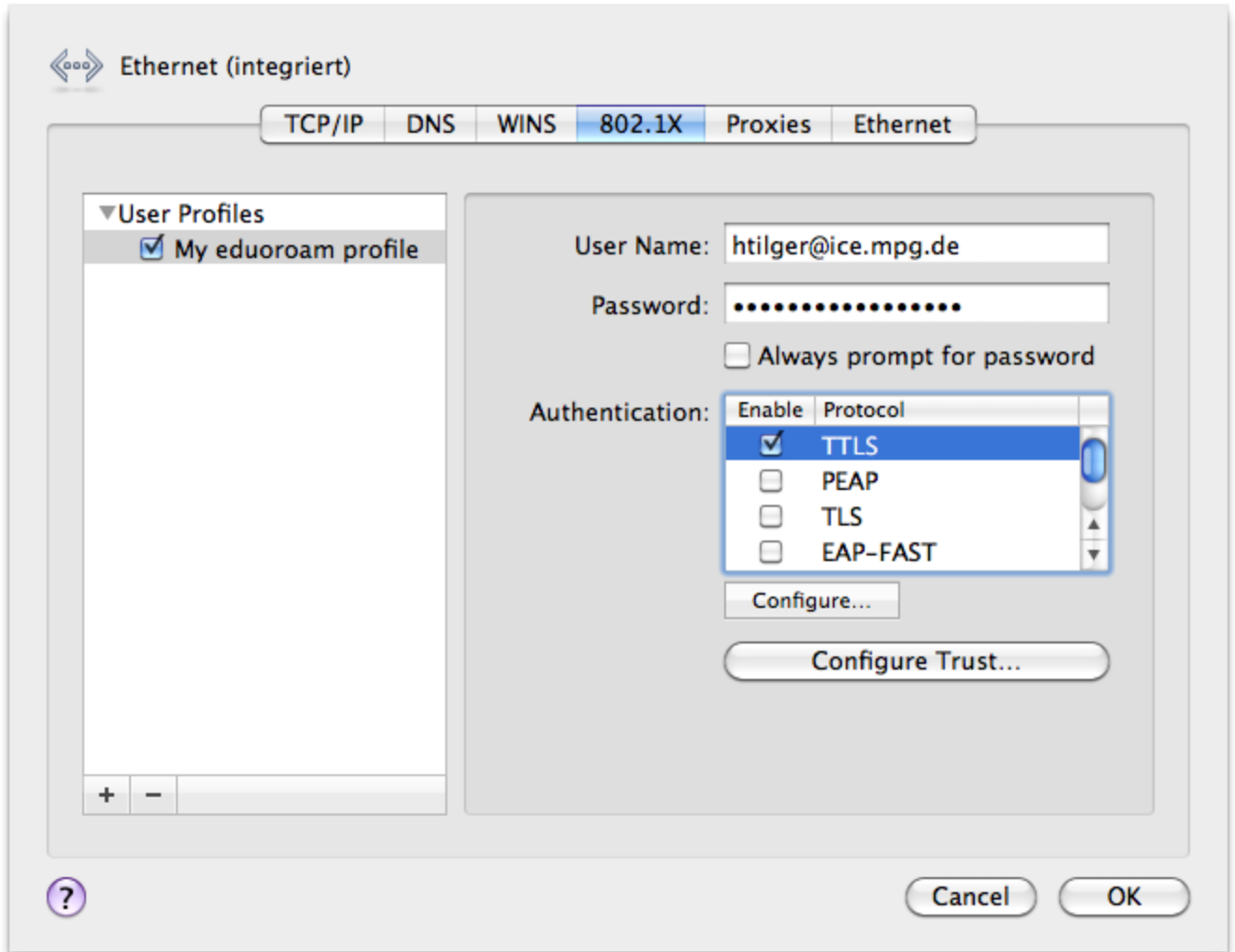
User Profile

Enter your ICE email address as user name and your ICE password ...



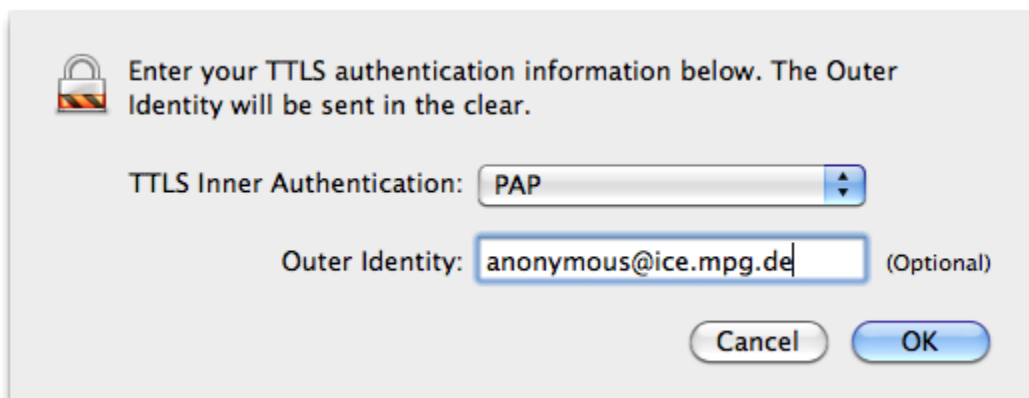
Account information

Disable all authentication methods but TTLS. Select TTLS and click on the small "Configure" button...



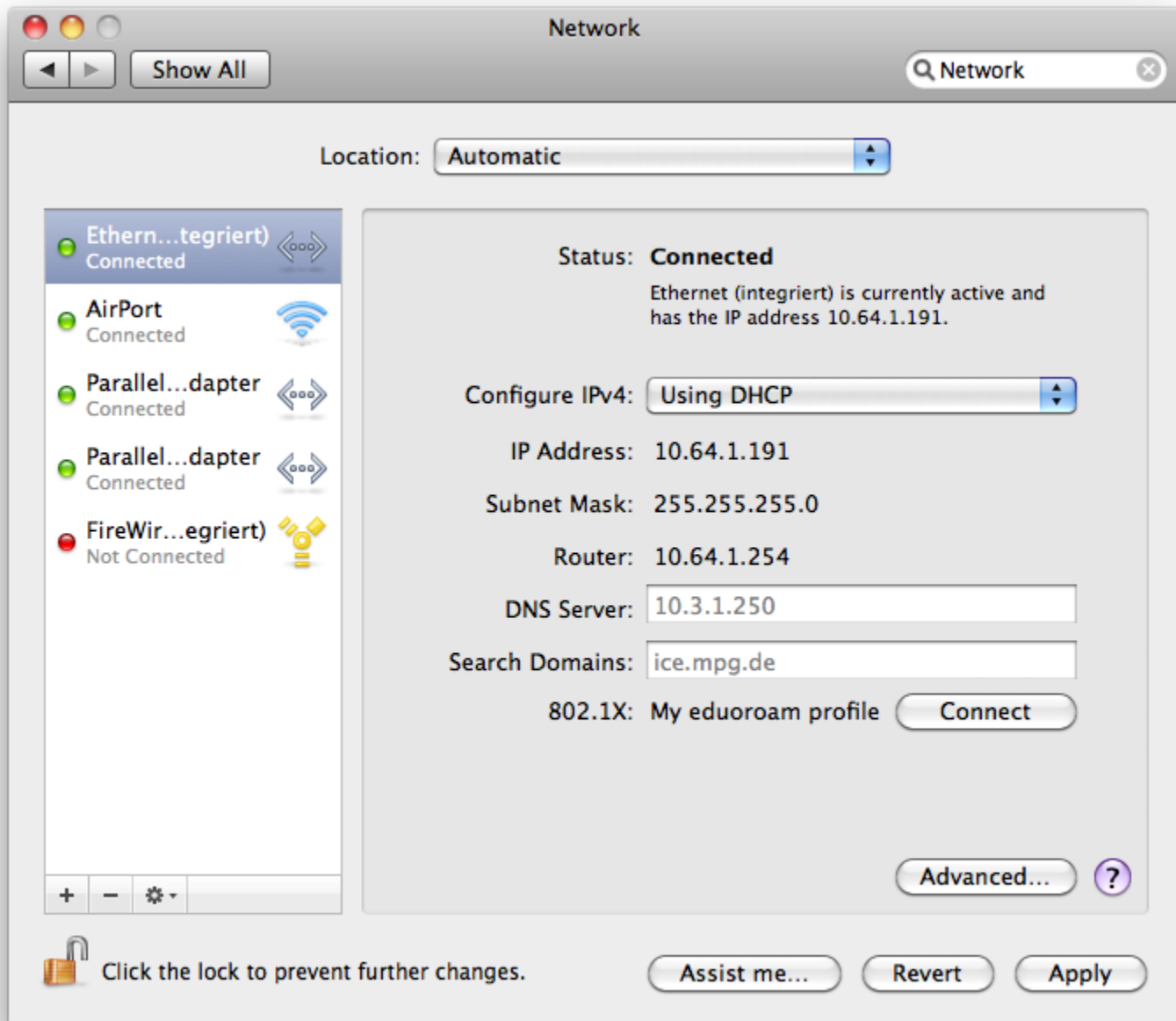
Authentication method

Choose "PAP" as inner authentication and enter "anonymous@ice.mpg.de" as outer identity...



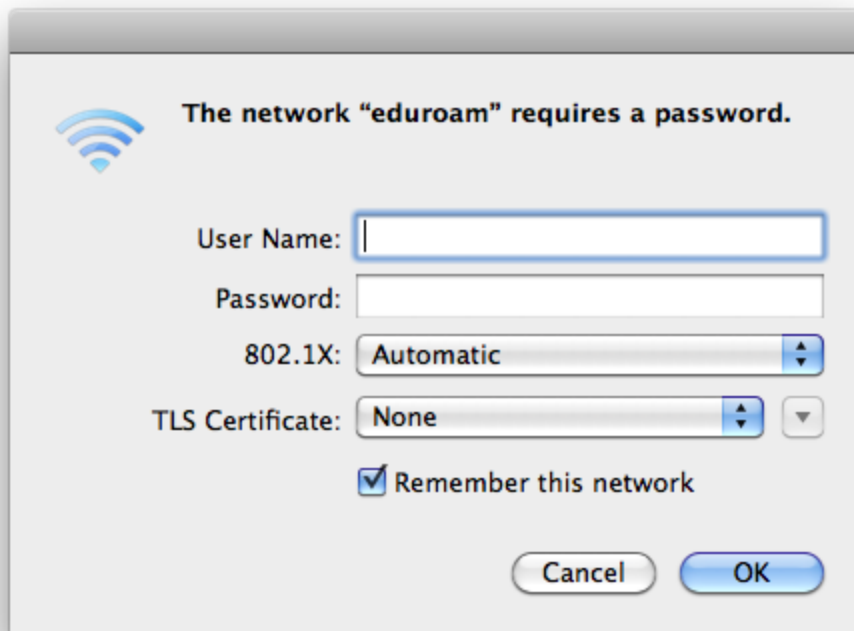
Inner authentication

Click "OK" and "Apply" until the "Advanced" dialog box is closed. Click "Apply" on the Network Preferences dialog box also...



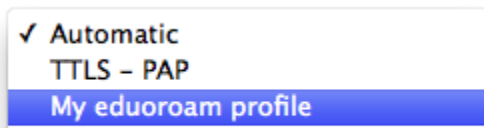
Network complete

Connect to the eudroam network by choosing it from your Airport settings. A login box will appear:



Login to eduoram

Choose your user profile here at the "802.1X" dropdown list ...



Choose your profile

...and click "OK". Since your request is routed to your home institution to get validated, your login request might run for a few seconds. Also you might be asked to accept a security certificate.
